

## WARRANTY

U.S. Robotics Inc. warrants to the original consumer purchaser that this product is free from any defects in materials or workmanship for a period of two years from the date of purchase. If such defect is discovered within the warranty period, U.S. ROBOTICS INC.'s sole obligation will be to repair or replace, at its election, the product free of charge on receipt of the unit (charges prepaid if mailed or shipped) with proof of date of purchase. This warranty shall not apply if the product is modified, tampered with, misused, or subjected to abnormal working conditions.

Consequential or incidental damages resulting from a breach of any applicable express or implied warranties are hereby excluded. Some states do not allow limitations on how long an implied warranty lasts or do not allow the exclusion of limitations of incidental or consequential damages, so the above limitations or exclusions may not apply to you.

This warranty gives you specific legal rights and you may also have other rights which vary from state to state. **IMPORTANT:** If you ship your unit, pack it securely and ship it charges prepaid and insured by parcel post or United Parcel Service.

Password, Telpac, USR logo and U.S. Robotics are trademarks of U.S. Robotics Inc.



**U.S. ROBOTICS INC.**  
1123 WEST WASHINGTON  
CHICAGO, ILLINOIS 60607  
(312) 733-0497

DISTRIBUTED BY:

(ACTUAL SIZE)

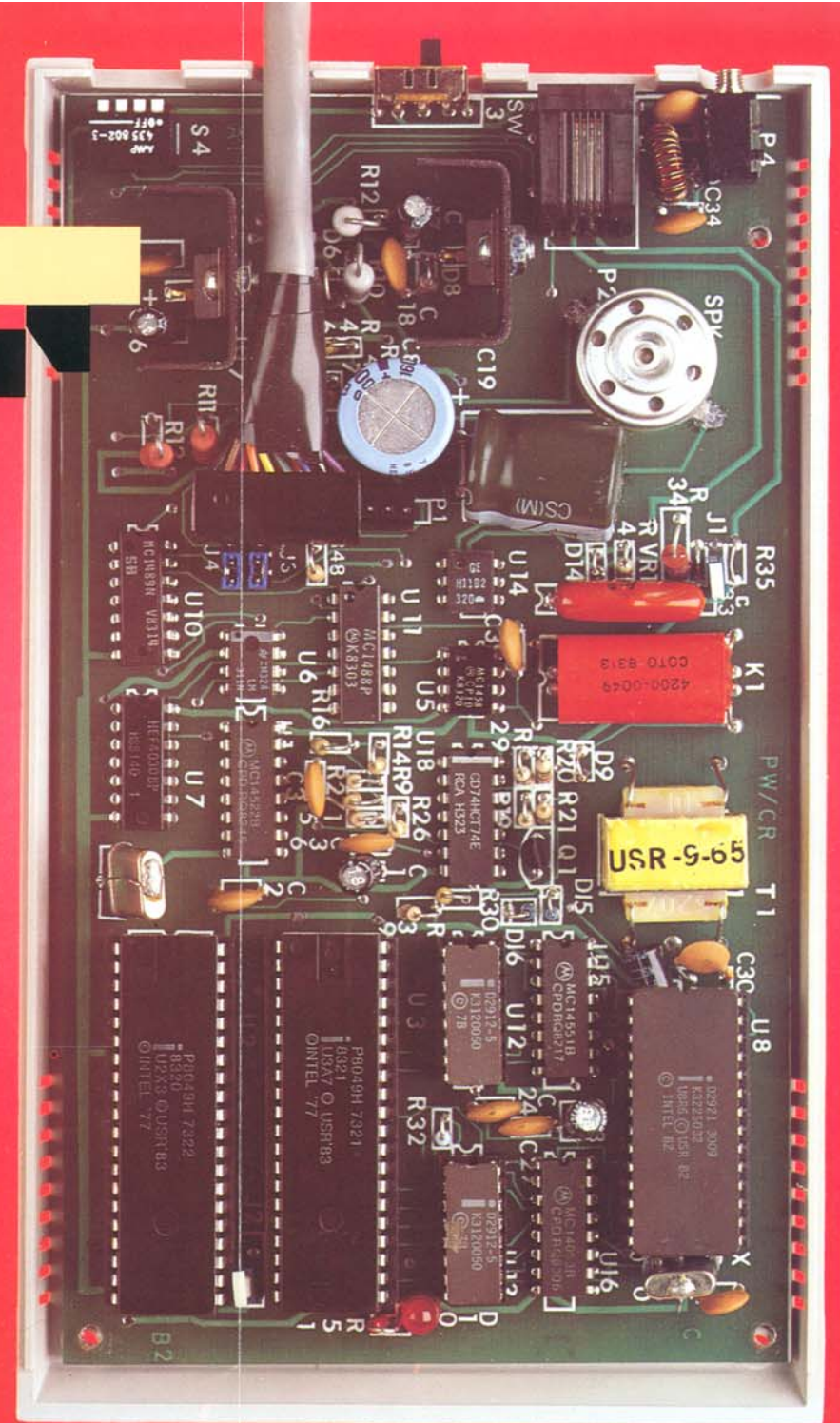
## The USR™ Friendly Modem

1200 BAUD

## TECHNICAL SUMMARY

1200 Baud, Bell 212A compatible  
(120 characters per second)  
0-300 Baud, Bell 103/113 Compatible  
(30 characters per second)  
Full Duplex/Half Duplex (Local Echo)  
Direct Connection to Phone Lines via  
RJ11C standard phone jack, FCC certified  
Auto Dial\*  
Auto Answer  
Manual Originate  
Manual Answer  
Auto Mode Select (originate/answer)  
Auto Speed Select  
Audio Phone Line Monitor  
DTR Override  
RS232 pins 2&3 reversible  
Pilot Light (LED)  
RS232 Interface cable included  
Power Supply included  
Phone Cable included  
Transmit Level - 9 dBm  
Receive Sensitivity - 48 dBm  
Dimensions: 4.4" x 7.4" x 1.4"

\* USR Telpac software available.





## PASSWORD™— YOUR ENTREE TO THE WORLD COMPUTER NETWORK

If you have a computer or terminal within reach of a telephone, the USR™ friendly modem is ready to extend its uses almost to the bounds of your imagination. It equips you to exchange files and programs with any other computer of any make. You can tap the resources of giant industrial and university computers. Or use the diverse services of commercial information networks like The Source.<sup>SM</sup>

## USR SOFTWARE LETS YOU DO THIS AND MORE — AUTOMATICALLY

Not only can the USR friendly modem do just about anything you ask it to, you can program your computer to do the asking for you with Telpac,<sup>TM</sup> the USR telecommunications software package. For example, it could ask for industrial closings late at night, when long distance rates are low, and have them ready for you to print out and read at breakfast — along with a memo it received from the home office. All while you sleep. If you use the phone a great deal, you can build a file of frequently used numbers for fast one-touch dialing. And if you store sensitive information, you can limit access to your computer with your own password. Briefly, it puts the state of the telecomputing art at your fingertips.

## HOW FAST IS PASSWORD?

Information networks and even some large computers charge as little as \$6 per hour. But a long distance phone connection may cost twice this much, so in telecomputing time is money.

Password transmits data at speeds up to 1200 baud — four times faster than most modems. In more familiar and practical terms, this is roughly 1200 words per minute. Password can place a call at 5:00 PM Chicago time and deliver nearly four pages of type-written text to a computer in Los Angeles by 3:01 PM — two hours earlier than it was sent! The long distance charge: 43 cents plus tax.

Password adjusts automatically to the baud rate of data it sends and receives; you can send to one computer at 1200 baud, and later receive from another at 300 baud without touching it.

## YOU PRESS A BUTTON. PASSWORD DOES THE REST.

Plugging Password in is as easy as 1, 2, 3. You can either connect the phone to the modem or use it elsewhere. Then push the button once to turn the USR friendly modem on; press it again to turn it off. A pilot light reminds you of where things stand. One touch and the modem is ready to receive ASCII commands from your computer for automatic dialing or to answer incoming calls and place the caller in direct contact with your computer. When the computers are through exchanging data, Password automatically resets and awaits the next incoming or outgoing call.

## AUDIO PHONE LINE MONITOR

Password normally establishes a phone link within a second, but it can be programmed to ring for as long as four minutes before signalling NO CARRIER. Meanwhile, the audio phone line monitor sounds dial tone, ring, busy, and other line signals to help you diagnose any phone link problem as it occurs (in contrast to visual monitors, which report after the call that there was a problem). It can be used to monitor data transmission, set to shut off automatically when a phone link is established, or switched off altogether.

## WHAT IF YOU WANT TO TALK ON THE PHONE?

This return to the simple life is easily managed. Just turn off the modem. You can also change from voice to data transmission, or vice versa, in the middle of a call.

## WHEN YOU CARRY YOUR COMPUTER, POCKET YOUR PASSWORD

The USR friendly modem is so compact we supply it with two strips of Velcro<sup>TM</sup> — one on the base and the other for any handy place, such as the back of your computer. Disconnect it in a moment and slip it into your coat pocket or briefcase.

## CONCEALED BY ITS SIMPLE EXTERIOR IS A SIMPLE INTERIOR

Incredible as it seems, Password does all this by means of just twelve integrated circuits. It stands to reason that this low parts count (a fraction of that in less sophisticated modem designs) translates directly into greater reliability and longer service life than most — and into a surprisingly low price. It is worth comparing operating features, cost, and our two-year warranty when you are choosing a modem for your personal use.

## TELPAC<sup>TM</sup>

Telpac<sup>TM</sup> and Password make your microcomputer an advanced yet easy-to-use telecommunications center. You can call other computers manually with the touch of a single key, or automatically at pre-selected times. Telpac dials, adjusts to correct baud rate, parity, duplex, etc., and gives passwords for entering as many as 14 host computers. The reverse is also possible, so that remote terminals can enter your host computer. Either way, the system is then ready for efficient file transfers or transmission of anything you type on your key-set. Transmission is monitored for accuracy by parity checks and two types of block check. Telpac also provides a number of utility functions for efficient reviewing, running, and revising of programs in your computer.

Telpac's simple built-in operating instructions are ready to consult any time at the command HELP — even in the midst of telecommunications. These are supplemented by the comprehensive user's manual that completes each package.

